

HD35AP... BASE UNIT (ACCESS POINT) MODELS AND FEATURES OF HD35AP-S BASIC SOFTWARE AND PLUS / CFR21 OPTIONS

The base units (Access Point) HD35AP... are supplied with basic HD35AP-S software by default. For advanced applications requiring a **multi-client** connection to the Database or the compliance to the **FDA 21 CFR part 11** standard, the **HD35AP-PLUS** and **HD35AP-CFR21** software options are available for a fee. The features of the basic software and the additional features of the software options are highlighted in the table below.

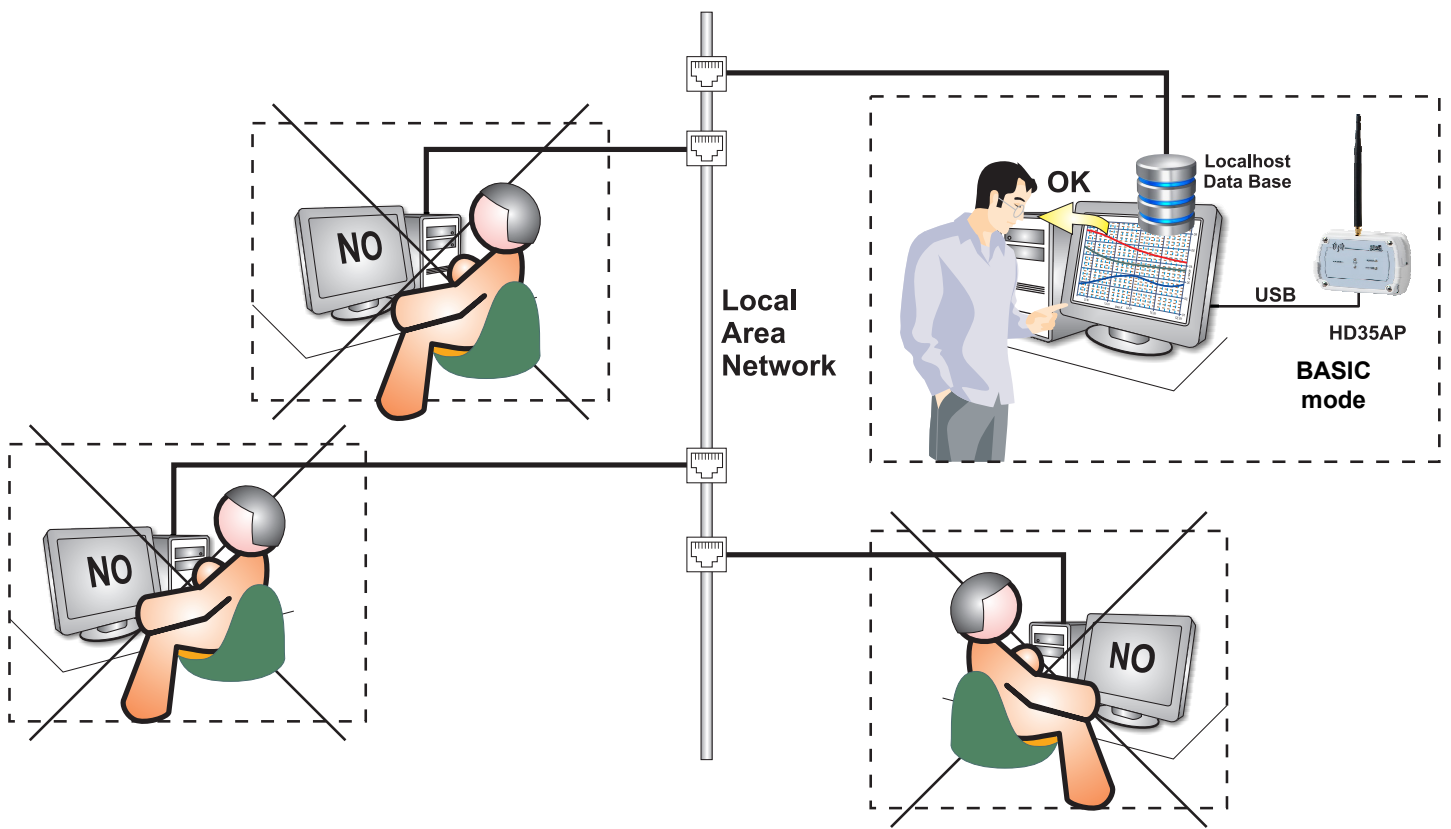
The activation of the software options can be requested at any time, even after purchase. In order to activate the software options after the purchase, please proceed as follows:

- fill in the application form that appears when you select *Request of Product License* in the *Help* menu of the software;
- send the completed application form to the dealer from whom the equipments have been purchased;
- after completion of the commercial practices, an activation file will be sent to the customer via e-mail;
- connect the base unit (access point) to the HD35AP-S software and select the *Products Activation* item in the *Help* menu of the software, then select the activation file received.

Available features:

	HD35AP HD35APD HD35APS			HD35APG			HD35APR			HD35APW		
	Basic	Plus	CFR 21	Basic	Plus	CFR 21	Basic	Plus	CFR 21	Basic	Plus	CFR 21
Peripherals												
USB connection	✓	✓	✓	✓	✓	✓	✓	✓	✓	✓	✓	✓
RS485 connection	Only HD35APS						✓	✓	✓			
Wi-Fi connection										✓	✓	✓
Ethernet connection							✓	✓	✓	✓	✓	✓
GSM/GPRS connection				✓	✓	✓						
Supported protocols												
USB proprietary	✓	✓	✓	✓	✓	✓	✓	✓	✓	✓	✓	✓
TCP/IP proprietary				✓	✓	✓	✓	✓	✓	✓	✓	✓
Modbus RTU	Only HD35APS						✓	✓	✓			
Modbus TCP/IP							✓	✓	✓	✓	✓	✓
Data download and viewing												
Automatical data download in background	✓	✓	✓	✓	✓	✓	✓	✓	✓	✓	✓	✓
Reading and writing of data in the local Database	✓	✓	✓	✓	✓	✓	✓	✓	✓	✓	✓	✓
Personalized graphical viewing of the data	✓	✓	✓	✓	✓	✓	✓	✓	✓	✓	✓	✓
Viewing of the data in table format	✓	✓	✓	✓	✓	✓	✓	✓	✓	✓	✓	✓
Exporting of the data in text format	✓	✓	✓	✓	✓	✓	✓	✓	✓	✓	✓	✓
Printing of the report	✓	✓	✓	✓	✓	✓	✓	✓	✓	✓	✓	✓
Monitoring via software	✓	✓	✓	✓	✓	✓	✓	✓	✓	✓	✓	✓
Utility for the Database backup	✓	✓	✓	✓	✓	✓	✓	✓	✓	✓	✓	✓
Sending of data via e-mail				✓	✓	✓	✓	✓	✓	✓	✓	✓
Sending of data to an FTP address and data download from FTP into the Database				✓(*)	✓	✓	✓(*)	✓	✓	✓(*)	✓	✓
Multi-client connection to the Database		✓	✓		✓	✓		✓	✓		✓	✓
Integrated web server												
Alarms												
Alarm thresholds	✓	✓	✓	✓	✓	✓	✓	✓	✓	✓	✓	✓
Alarm SMSes				✓	✓	✓						
Alarm e-mails				✓	✓	✓	✓	✓	✓	✓	✓	✓
Configuration												
Devices configuration	✓	✓	✓	✓	✓	✓	✓	✓	✓	✓	✓	✓
Change of configuration through password	✓	✓	✓	✓	✓	✓	✓	✓	✓	✓	✓	✓
Calibration of sensors (RH, CO, CO ₂ , ΔP)	✓	✓	✓	✓	✓	✓	✓	✓	✓	✓	✓	✓
Password protection of calibration	✓	✓	✓	✓	✓	✓	✓	✓	✓	✓	✓	✓
Subdivision of data loggers into groups	✓	✓	✓	✓	✓	✓	✓	✓	✓	✓	✓	✓
Management compliant to FDA 21 CFR part 11			✓			✓			✓			✓
Users management			✓			✓			✓			✓
List of software activities			✓			✓			✓			✓

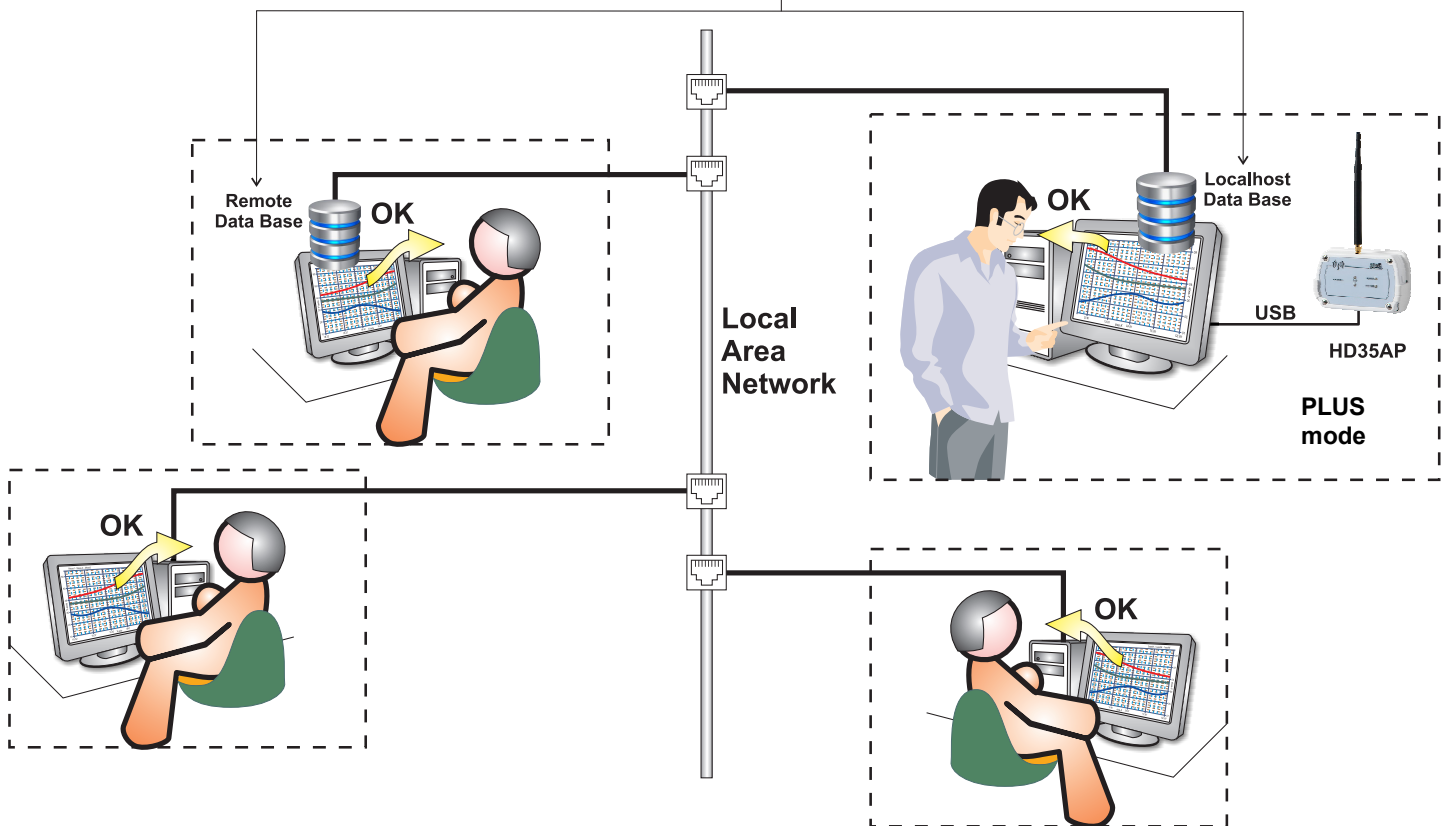
(*) In the basic version, data are transmitted with 2 minutes minimum interval and only if the network has no more than 5 data loggers.



BASIC FEATURES

The data can be stored and viewed only in the local data base.

The Data Base can reside in any PC of the local network



PLUS FEATURES

The data can be stored both in a local and remote data base. The data can be viewed from any PC of the local network in which the HD35AP-S software has been installed (multi-client connection to the Data Base).